

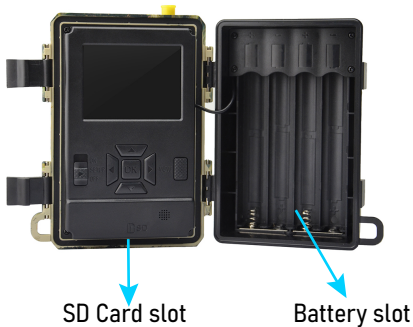
Trail Camera Quick Start



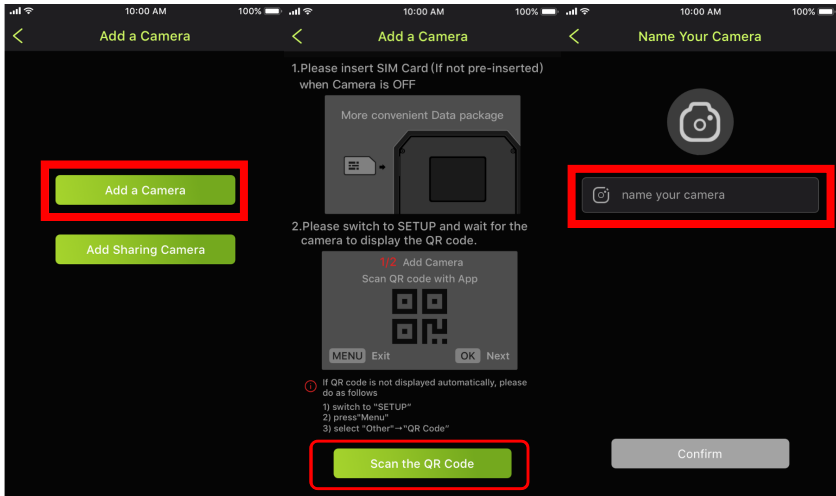
V2.0

Get Started Free

1. Download TrailCam Ace in App Store/Google Play
2. Register account on APP, and activate the account by clicking the email you received, and log in (remember to check your Spam).
3. Install camera antenna, SD card (up to 32GB) and 8pcs AA battery
(Please use the inserted SIM card)

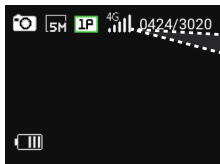


4. Click "Add a Camera-->Scan the QR Code" in APP, scan the camera QR code to add camera to your APP account, then you can name your camera.

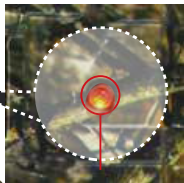


Start Using

1. Turn off the camera, then turn to "Setup" mode, wait till the camera gets 4G signal
2. Press "OK" to take a photo manually then you can check photo on your APP
3. Turn camera to "ON" mode, camera screen will turn off and indicator light will flash 5 times, then camera will be in auto-detecting mode.



4G signal



Indicator

Let's start using it!

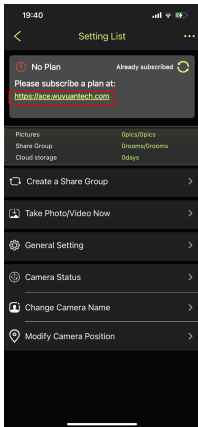
If you want to experience higher-level data packages, please follow next steps.

Purchase Plan

1. Scan QR code below, or you can directly click the URL in the APP>Camera>Setting List



<https://ace.wuyuantech.com>



2. Enter your email and password to log in

3. Enter Package Plan, tap “Change” or “Purchase” button under the camera, select Camera> select Plan> select Payment Method> Place Order (Please check auto renewal to subscribe.)

